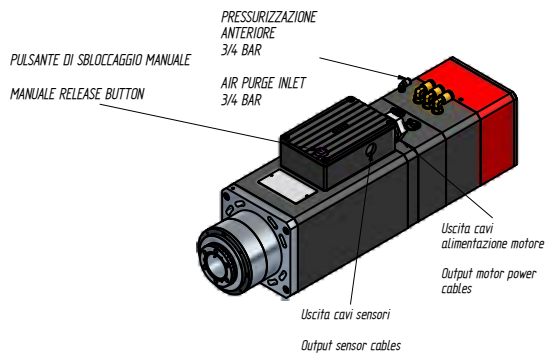
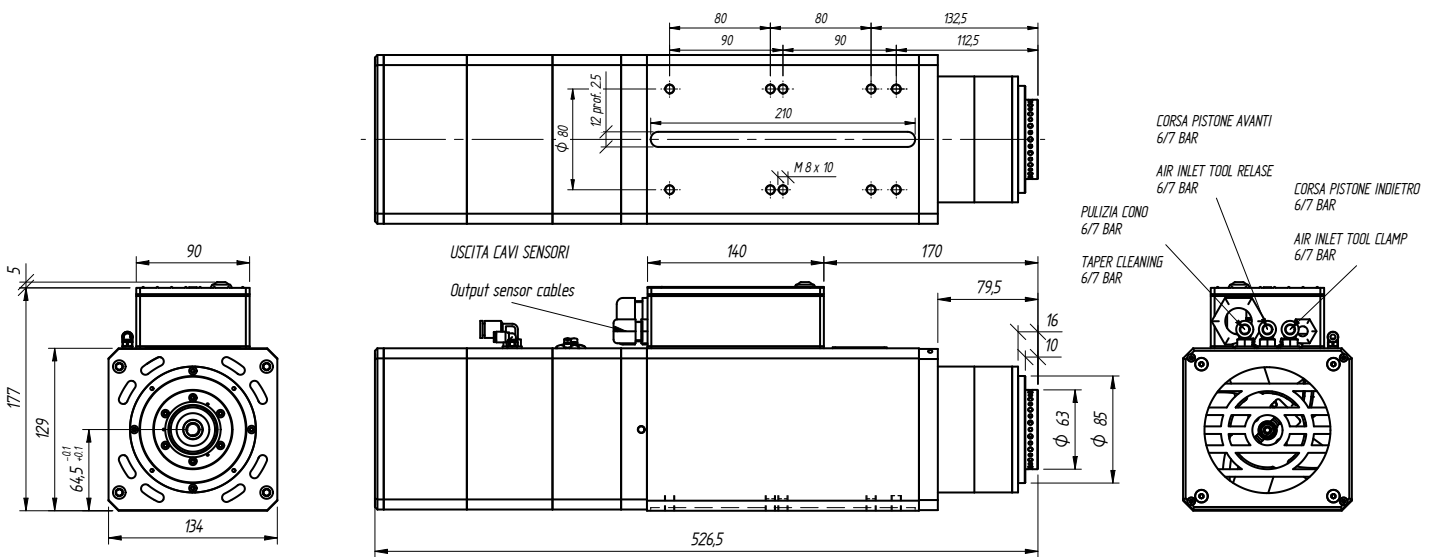


# TMA 5 EV HSK F63



TYPE	VOLTAGE [Volt]	FREQUENCY [Hz]	RPM	DELIVER POWER [Kw]	ABSOR. [Amp]	Cos j	WEIGHT [Kg]
TMA5 13/4 HSK F63 EV	350	400/600	12000/18000	6,0	16,6	0,72	30
TMA5 13/4 HSK F63 EV	350	600/800	18000/24000	7,5	19,7	0,72	30
TMA5 14/2 HSK F63 EV	350	200/300	12000/18000	7,0	16,0	0,85	30



VENTILATORE		
Tensione nominale	Nominal voltage	24 VDC
Range tensione nominale	Nominal voltage range	16 .. 30 VDC
Potenza	Power input	65 W

